

EPICENTER 2000 SERIES
VARSITY MODEL
NATURAL WOOD ATHLETIC LOCKERS



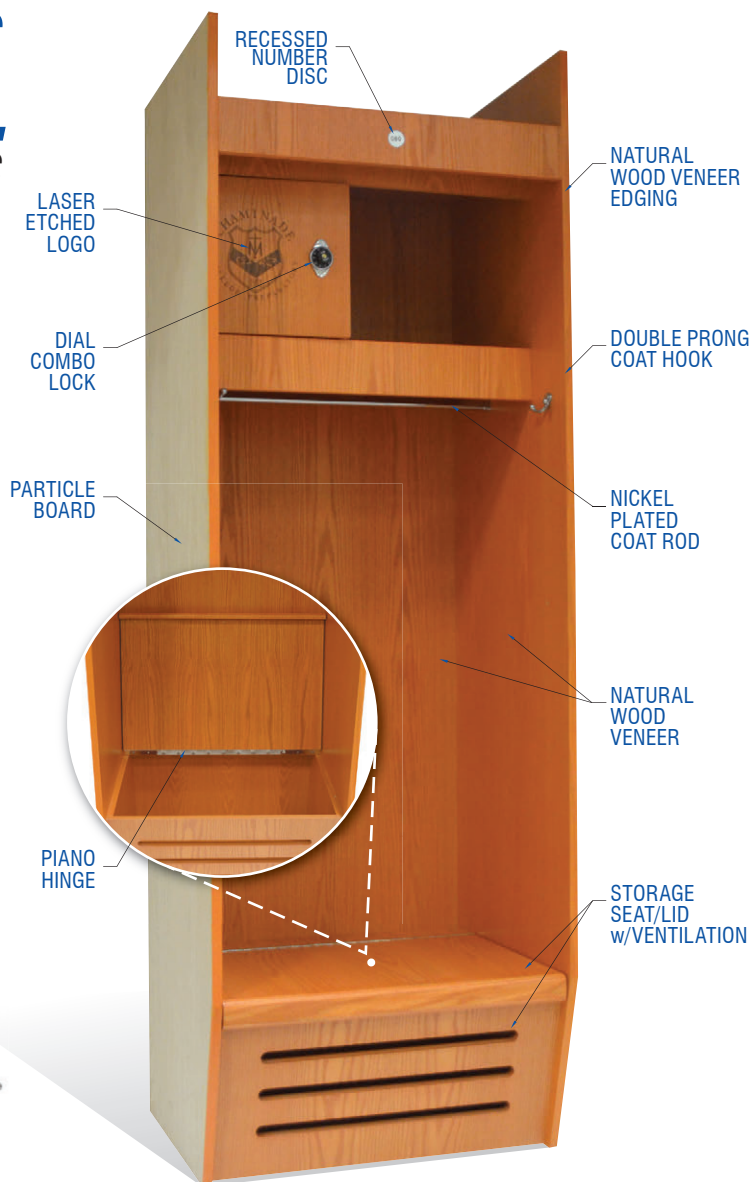
P.O. BOX 4090 • ONTARIO, CA 91761 • (951) 727-8600 • (951) 727-8612 FAX • WWW.IDEALOCKERS.COM

EPICENTER 2000 SERIES VARSITY MODEL NATURAL WOOD ATHLETIC LOCKERS



Affordable and luxurious, our **Epicenter 2000 Series Varsity Model Athletic Locker** is both hand-made, and finely crafted using five distinctively elegant natural wood veneers. Open space at the top of each locker provides storage for helmets and shoulder pads, all being set off by a bold trim piece. A security vault equipped with a dial combination lockset with master key bypass, and mounted with a life time guaranteed, heavy duty euro-concealed hinges. Adjacent to the vault is a spacious hat shelf. Again, set off with a generous trim piece. Ample hanging space is provide in the midsection of each locker using a 1" diameter nickel plated coat rod, and two cast aluminum coat hooks. And, finally, the locker system provides an inside seat with piano hinge, and ventilated storage.

Our Varsity athletic locker is sealed and finished with our premium grade, three coats of pre-catalyzed urethane lacquer, including sanding between coats. Warranty includes all materials and workmanship for three years after delivery. Accessories are available upon request.


[LEARN MORE](#)


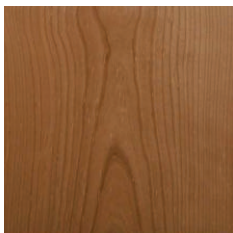
FEATURES

- Custom and standard designs
- Class II-B fire retardant
- Unlimited color selection
- Finishes limited to nature's resources
- Piano hinge on seat lid
- Nickel plated coat rod
- Side open cubby for helmet or hat storage
- Large hanging/sitting area with coat rod & hooks
- Dial combination lock on security vault door
- 2 double prong side mounted coat hook
- 1½" diameter recessed number disc, satin chrome finish
- Heavy duty euro-concealed hinges on security vault door
- Security vault with dial combination lock & engraved logo
- Bottom storage, bull-nosed seat/lid, and ventilation slots
- Stain and clear satin finish
- Three year warranty

INSTALLATION | CHAMINADE COLLEGE PREP.



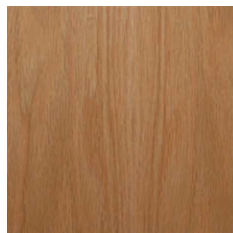
STANDARD NATURAL WOOD VENEER WITH CLEAR SATIN FINISH



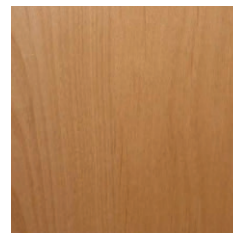
CHERRY



MAPLE



RED OAK



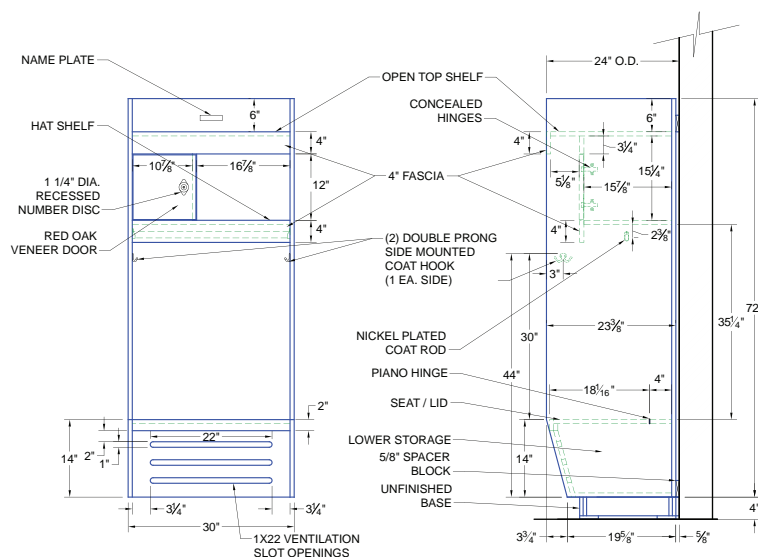
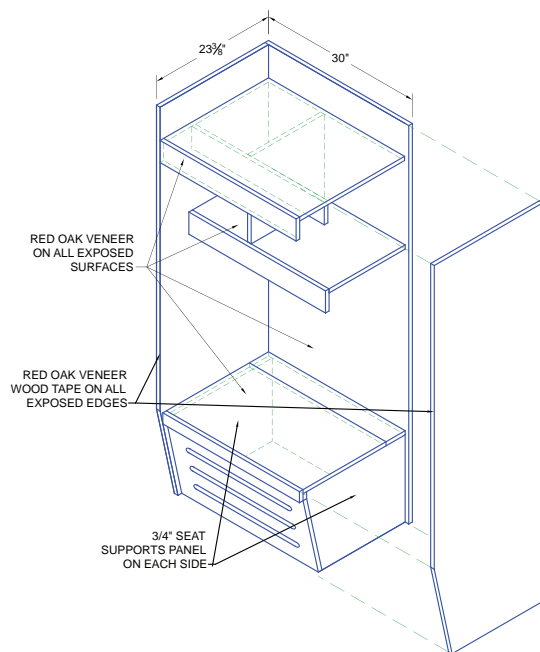
ALDER

WATER-BASED WOOD STAIN SELECTION GUIDE

		WOOD SPECIES			
		Cherry	Maple	Red Oak	Alder
STAIN & FINISH	Clear				
	Light Oak #201				
	Walnut #213				
	Dark Oak #224				

Note: Color stains on this sheet are not precise, and may vary slightly from actual production, due to variations in the display of colors on computer screens and printers

LOCKER DIMENSIONS



PRODUCT SPECIFICATIONS

- Frame Components**
 - Sides = 5/8" 48 lb. density industrial grade 1-M-2, 45 particle board, .006" frosty white low pressure laminate vinyl.
 - Shelves = 3/4" 48 lb. density industrial grade 1-M-2, 45 particle board, black thermal fused melamine.
 - Backpanel = 1/4" 48 lb. exterior grade medium density fiberboard, .006" frosty white low pressure laminated vinyl, vnetilated.
- Frame Construction** = Blunt joint, 2" t-head nail and screw.
- Edging** (select one)
 - 2000 Series includes 1/8" maple lumber.
- Hinges** (select one)
 - 2000 Series includes heavy duty, euro-concealed, four way adjustable, 120 degree opening, self-closing, nickel plated hinges (CH).
- Doors** = 3/4" Grade A-1 Plain Sliced Maple Veneer for all exposed surfaces. Substrate 3/4" Classic core veneer panels.

ORDERING INSTRUCTIONS

Example:

Epicenter 2000 Series, Varsity, 12 x 18 x 72", WV, RP, CH, WT

- | | 1 | 2 | 3 | 4 | 5 | 6 | 7 |
|---|--|---|---|---|---|---|---|
| 1 | Specify Epicenter 2000 Series for Wood Veneer Athletic Lockers. Includes (WT) Wood Tape, and (CH) Euro Concealed Hinges. | | | | | | |
| 2 | Select the style and size locker compartments such as the Varsity model, or customized it to your specifications. | | | | | | |
| 3 | Confirm the frame dimensions: Width x Depth x Height. | | | | | | |

- Select wood veneer as your exterior surface and choose from our selection of water based wood stains.
- Specify Locks. (RP) = Recessed Padlock Hasp, (PC) = Pushbutton Combination, (DC) = Dial Combination, (CL) = Card Lock, (CO) = Coin-Operated, (KL) = Keyed.
- Specify Hinges. (CH) = Concealed Hinge
- Specify Edging. (WT) = Wood Tape

AIA SPECIFICATIONS

EPICENTER 2000 SERIES

NATURAL WOOD ATHLETIC LOCKERS

Requirements of Divisions 0 and 1 apply to work of this section.

1.0 GENERAL

1.1 SCOPE OF WORK INCLUDED

- A. The furnishing and installation of prefabricated WIC Type I multiple self-supporting modular water resistant, custom grade, natural wood lockers.

1.2 RELATED WORK SPECIFIED ELSEWHERE

- A. Architectural Woodwork - Section 06400
- B. Wood and Plastic Doors - Section 08200
- C. Wood and Plastic Windows - Section 08210

1.3 STANDARDS

- A. Minimum standard for water resistant, natural wood lockers shall conform to WIC "Manual of Millwork" latest edition.

1.4 QUALITY ASSURANCE

- A. All parts and hardware shall be WIC compliant, structurally sound and free from defects, in material and workmanship under normal use and service for a period of three (3) years. All lock parts warranted for a period of one (1) year by the respective manufacturer.

1.5 SUBMITTALS

- A. Submit two copies of AWS compliant shop drawings for all items of finish work before fabrication.
- B. Manufacturer's descriptive data of all materials and products construction, overall dimensions for installation of lockers, accessories, and trim.
- C. Submit four (4) 4x4" stained finish on plain slice white birch veneer for architects approval.

1.6 PRODUCT HANDLING, DELIVERY & STORAGE

- A. Deliver all lockers when project construction is ready for installation. Store lockers in dry, ventilated area and protect all finishes from soiling and damage during handling.

2.0 PRODUCTS

2.1 GRADES

- A. Furnish EPICENTER 2000 Series furniture grade natural wood lockers in accordance with WIC "Manual of Millwork", Section 15-Natural Wood Casework for Custom and Premium grades.

2.2 ACCEPTABLE MANUFACTURER

- A. Ideal Products, Inc. PO Box 4090, Ontario, CA 91761.

2.3 MATERIALS

- A. Grade A-1 Plain Sliced Maple Veneer for all exposed surfaces.
- B. Substrate 3/4" Classic core veneer panels.
- C. Edging 1/8" maple lumber.
- D. End Panels and Fillers;
 - 1. 3/4" grade A-1 natural veneer finished to match doors.
 - 2. Edged with matching natural wood veneer.

2.4 HARDWARE

- A. Hinges, heavy duty, Euro-concealed, 6 way adjustable, 125 degree opening, self-closing, nickel plated, lifetime guarantee (CH) on vault door with team logo.
- B. Piano hinges for lid.
- C. Clothes hooks, double prong stainless steel and 1 1/16" coat rod.

2.5 FABRICATION

- A. Lockers shall be fabricated using blunt joint, nail and screw joinery.
- B. Fabricate lockers square, rigid, and without warp.
- C. Machine all parts and attachment holes accurately and without chips.
- D. Fabricate corners, fillers, scribes, tops as required for installation.

3.0 EXECUTION

3.1 CONSTRUCTION

- A. Conform to requirements of WIC "Manual of Millworks", latest edition, for joinery requirements using blunt joint, nail and screw construction.

3.2 INSTALLATION

- A. Install lockers at the locations shown in accordance with manufacturer's instructions for plumb, level, rigid and flush installation.
- B. Lockers are easily installed on a standard prefabricated 4 x 17 x 72" unfinished bases per locker room layout, cut to fit as required, level bases using readily available shim shingles.
- C. Hang wall straps locker height less 1/2" above bases, spaced approximately 4 to 5 feet apart.
- D. Stack lockers one next to the other per plans, allowing approximately 24" separation in corners, bolt each from together using manufacturer supplied fasteners through predrilled holes. Be sure to align leading edges of locker frames with each other as fasteners are tightened.
- E. Install end and corner fillers and caps, cut to size in field per plans.
- F. Install end panels.
- G. Install number discs, clean lockers, remove all related trash and debris from job-site.

3.2 CLEAN-UP

- A. Upon completion of the work, remove surplus materials, rubbish and debris resulting from the operations under the section, including equipment and implements of service, and leave the entire structure and site insofar as the work of this section concerned in a neat, clean, and acceptable condition.

3.3 WARRANTY

- A. Ideal Products, Inc. warrants its Phenolic Lockers, properly maintained, against delamination, breakage or corrosion for 10 years from the date of receipt by the customer. If materials are found defective during that period for the reasons listed above, the material will be replaced free of charge.
No credits or allowances will be issued for any labor or expenses related to the replacement of components covered under the warranty plan. All such expenses are to be borne by the buyer.

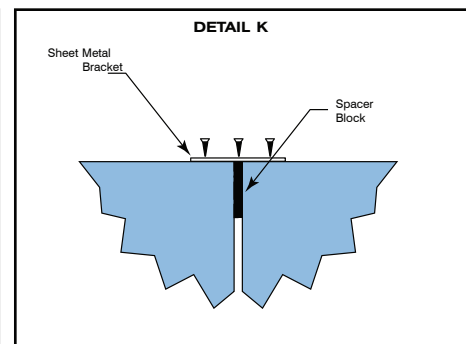
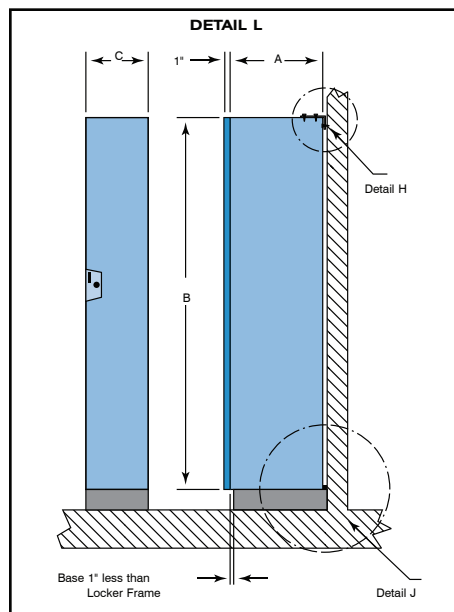
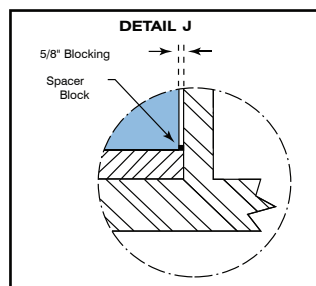
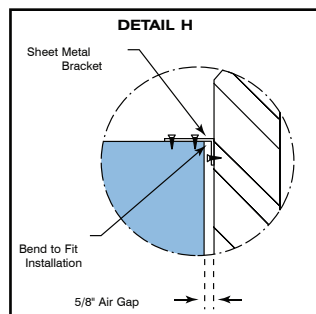
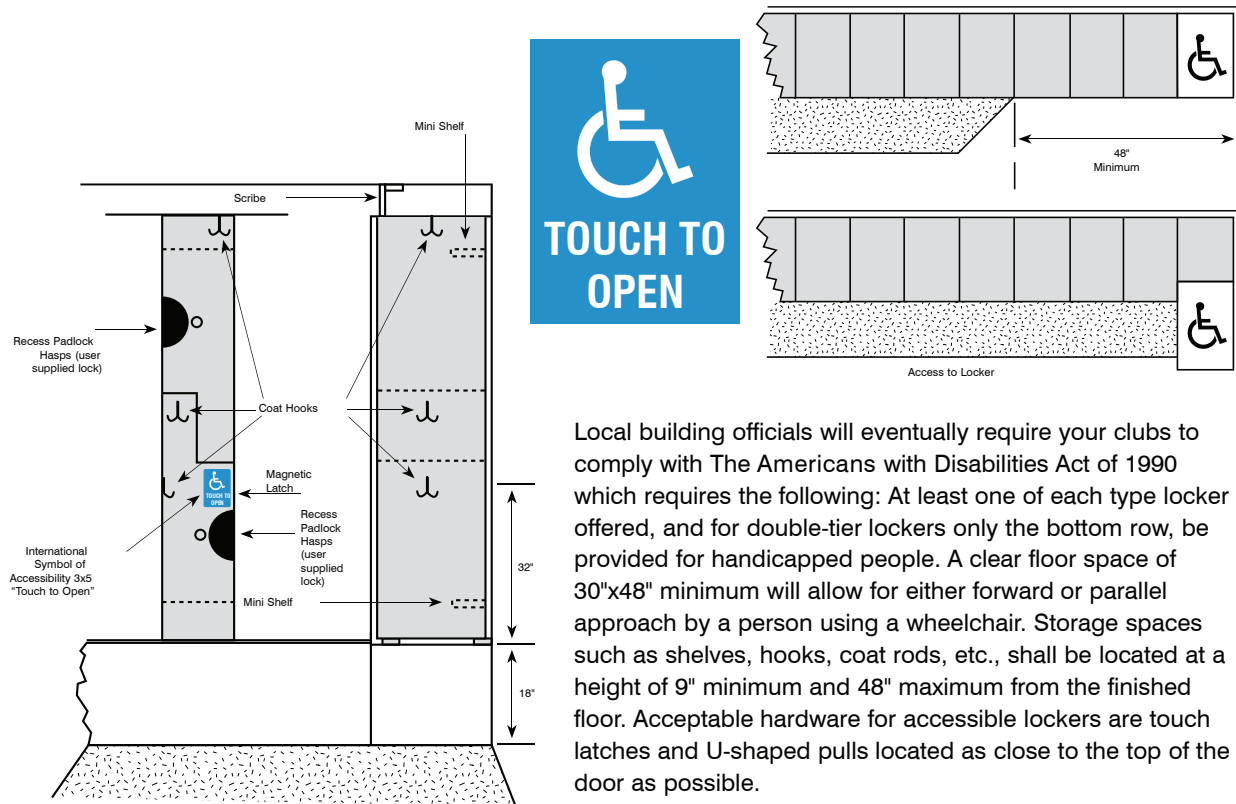
Ideal Products, Inc. reserves the right to change/modify specifications at any time.

General Notes

1. Locker to be standard as manufactured by Ideal Lockers.
2. $\frac{5}{8}$ " spacers edged with matching edging to allow for hand clearance.
3. Single end panels $18\frac{5}{8}$ " wide to cover rear ventilation.
4. Double end panels $36\frac{5}{8}$ " wide to allow for air space.
5. Fillers are required.
6. TLW (total locker width) = Total number of lockers x locker width. 12" lockers are 12.0625" wide; 16" lockers are 16.0625" wide.
7. Consult factory for requirements.



HANDICAPPED OPTIONS





IDEAL PRODUCTS, INC.

IDEAL PRODUCTS, INC. • P.O. BOX 4090 • ONTARIO, CA 91761 • (951) 727-8600 • (951) 727-8612 FAX • WWW.IDEALOCKERS.COM