

**IMPERIAL 1000 SERIES**  
FURNITURE QUALITY WOOD LOCKERS  
WITH VENEER DOORS



P.O. BOX 4090 • ONTARIO, CA 91761 • (951) 727-8600 • (951) 727-8612 FAX • [WWW.IDEALOCKERS.COM](http://WWW.IDEALOCKERS.COM)

## IMPERIAL 1000 SERIES

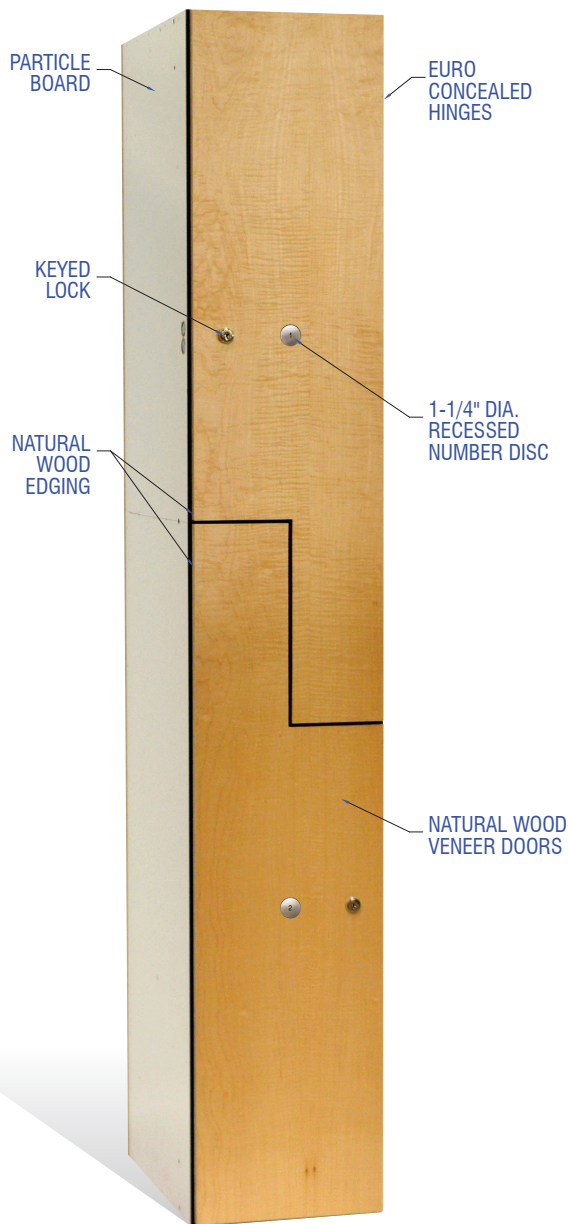
### FURNITURE QUALITY WOOD LOCKERS WITH VENEER DOORS



#### Ideal's Natural Wood Veneers

The standard **Imperial 1000 Series** locker configuration (12"W x 18"D x 72"H). Standard features include A-1 grade natural wood veneer doors, natural wood edging, cam padlock hasps, heavy duty euro-concealed hinges, aluminum or brass coat hooks, nickel plated coat rods, number discs in satin chrome, satin brass or black safety plated mirrors, and rear panel ventilation.

We have a limited selection of natural woods: i.e., cherry; maple; red oak; and alder. Most will be available in various cuts such as plain sliced, rotary cut, quarter sawn, etc. Specify a stain or finish.

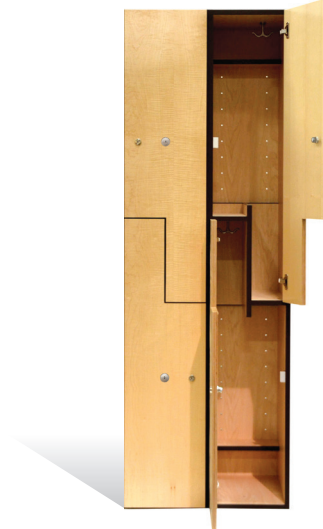
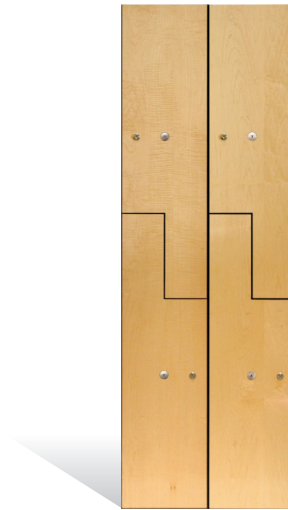
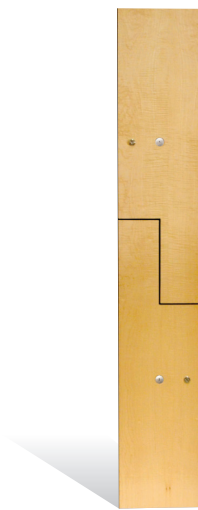

[LEARN MORE](#)


#### Features

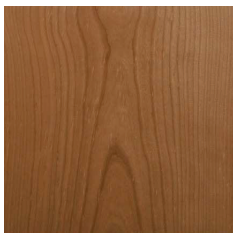
- 48lb. Industrial Grade Particleboard Core
- Natural Wood 3/4" Thickness Veneer A-1 Grade Doors
- Natural Wood Edging – 1mm Tape to Match Wood Selection
- Ventilation Through Rear Panel 32mm System
- Cam Padlock Hasp
- Heavy Duty Euro-Concealed Hinges
- Double Prong Aluminum or Brass Ceiling Clothes Hooks
- Nickel Plated Coat Rods
- Number Discs in Satin Chrome, Satin Brass or Black
- Wood Stain as Specified; Hand Applied
- Premium Grade 3 Coats Clear Satin Finish
- Custom and Standard Designs
- Plain Sliced
- Quarter Sawn
- Rift Cut
- Book or Slip Matched
- Three Year Warranty



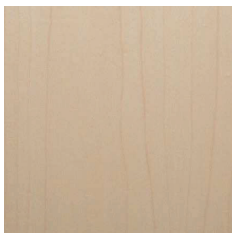
## INSTALLATIONS



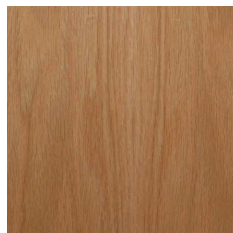
## STANDARD WOOD VENEERS WITH CLEAR SATIN FINISH



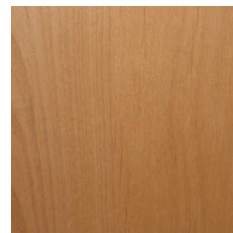
CHERRY



MAPLE



RED OAK



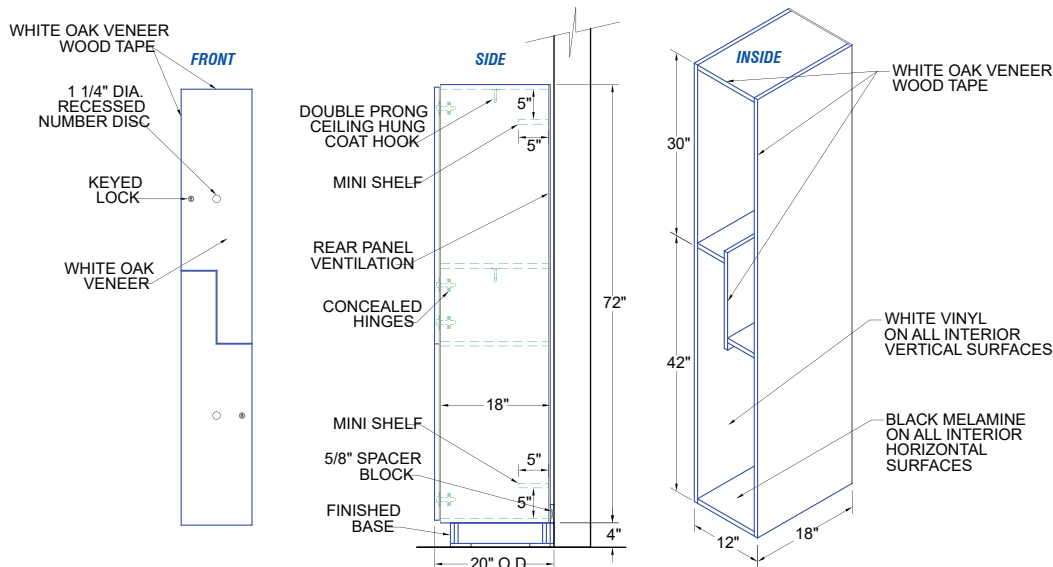
ALDER

## WATER-BASED WOOD STAIN SELECTION GUIDE

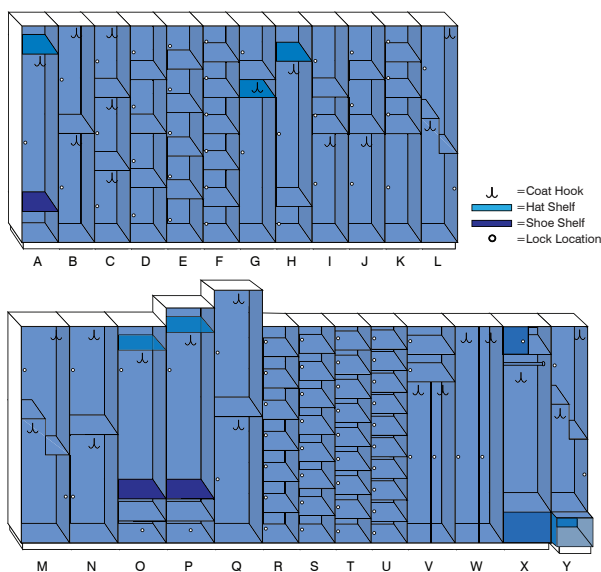
		WOOD SPECIES			
		Cherry	Maple	Red Oak	Alder
STAIN & FINISH	Clear				
	Light Oak #201				
	Walnut #213				
	Dark Oak #224				

**Note:** Color stains on this sheet are not precise, and may vary slightly from actual production, due to variations in the display of colors on computer screens and printers

## LOCKER DIMENSIONS | MODEL-L 12"x18"x72" WOV, WT, CH, KL



## LOCKER CONFIGURATIONS



ITEM	DESCRIPTION	WIDTH	DEPTH	HEIGHT
A	One Tier	12"	18"	72"
B	Standard Two Tier	12"	18"	72"
C	Three Tier - Gymbag	12"	18"	72"
D	Four Tier	12"	18"	72"
E	Five Tier	12"	18"	72"
F	Six Tier - Purse Size	12"	18"	72"
G	Modified Two Tier	12"	18"	72"
H	Modified Two Tier	12"	18"	72"
I	Modified Three Tier	12"	18"	72"
J	Modified Three Tier	12"	18"	72"
K	Modified Four Tier	12"	18"	72"
L	Executive Style Two Tier	12"	18"	72"
M	Executive Style Two Tier	16"	18"	72"
N	Standard Two Tier	16"	18"	72"
O	Tennis Club	16"	18"	72"
P	Country Club	16"	18"	78"
Q	Maxi-space	16"	18"	84"
R	Seven Tier	12"	18"	72"
S	Eight Tier	12"	18"	72"
T	Nine Tier	12"	18"	72"
U	Ten Tier - Sneaker	12"	18"	72"
V	Vertical Quad Tier	16"	18"	72"
W	Vertical Two Tier	16"	18"	72"
X	Epicenter	16"	18"	72"
Y	3000 Series Model "L"	12"	18"	72"

## PRODUCT SPECIFICATIONS

- Frame Components:**
  - Sides = 5/8" 48 lb. density industrial grade 1-M-2, 45 particle board, .006" frosty white low pressure laminate vinyl.
  - Shelves = 3/4" 48 lb. density industrial grade 1-M-2, 45 particle board, black thermal fused melamine.
  - Backpanel = 1/4" 48 lb. exterior grade medium density fiberboard, .006" frosty white low pressure laminated vinyl, vnetilated.
- Frame Construction:** Blunt joint, 2" t-head nail and screw.
- Edging:** 1000 Series includes natural wood 1mm tape to match (WV).
- Hinges:** Heavy duty, euro-concealed, four way adjustable, 120 degree opening, self-closing nickel plated hinges (CH).
- Doors:** 1000 series include natural wood 3/4" thickness veneer A-1 grade premium grade.
- Finish:** Premium grade 3 coats clear satin with sanding between coats. Final coat sanding satin.

## AIA SPECIFICATIONS

### 1.0 GENERAL

#### 1.1 SCOPE OF WORK INCLUDED

- A. The furnishing and installation of prefabricated WIC Type I multiple self-supporting modular water resistant, custom grade, natural wood lockers.

#### 1.2 RELATED WORK SPECIFIED ELSEWHERE

- A. Architectural Woodwork - Section 06400  
B. Wood Doors - Section 08200  
C. Wood windows - Section 08210

#### 1.3 STANDARDS

- A. Minimum standard for water resistant, natural wood lockers shall conform to WIC "Manual of Millwork" latest edition.

#### 1.4 QUALITY ASSURANCE

- A. All parts and hardware shall be WIC compliant, structurally sound and free from defects, in material and workmanship under normal use and service for a period of three (3) years. All lock parts warranted for a period of one (1) year by the respective manufacturer.

#### 1.5 SUBMITTALS

- A. Submit two copies of WIC compliant shop drawings for all items of finish work before fabrication.  
B. Manufacturer's descriptive data of all materials and products construction, overall dimensions for installation of lockers, accessories, and trim.  
C. Submit four (4) 4x4" stained finish on plain slice white birch veneer for architects approval.

#### 1.6 PRODUCT HANDLING, DELIVERY & STORAGE

- A. Deliver all lockers when project construction is ready for installation. Store lockers in dry, ventilated area and protect all finishes from soiling and damage during handling.

### 2.0 PRODUCTS

#### 2.1 GRADES

- A. Furnish Imperial 1000 Series furniture grade natural wood lockers in accordance with WIC "Manual of Millwork", Section 15 - Natural Wood Casework for Custom and Premium grades.

#### 2.2 ACCEPTABLE MANUFACTURER

- A. Ideal Products, Inc. PO Box 4090, Ontario, CA 91761. Lockers to be Imperial 1000 Series NATURAL WOOD LOCKERS WITH RAISED PANEL DOORS.

#### 2.3 MATERIALS

- A. Locker interior:  
1. Interior vertical surfaces of sides and back panel are finish with 6mil frosty white vinyl.  
2. Interior horizontal surfaces of shelves, tops and bottoms are finished with black thermal fused melamine.  
3. Locker frame constructed of 48lb. industrial grade particleboard core ANSA A208.1 grade 1-M-2, 45(Sides=5/8", Shelves=3/4", Back=1/4")  
4. Frame edged with natural wood veneer to match doors.  
B. DOORS  
1. Imperial 1000 series natural wood veneer (WV) 3/4" thickness A-1 grade as specified. Choose from plain-sliced, rift-cut, book-matched, etc.  
C. End Panels and Fillers;  
1. 3/4" grade A-1 natural veneer finished to match doors.  
2. Edged with matching natural wood veneer.

### 2.4 HARDWARE

- A. Hinges, heavy duty, Euro-concealed, 6 way adjustable, 125 degree opening, self-closing, nickel plated, lifetime guarantee (CH).  
B. Locks, heavy duty, select one:  
1. Campadlock hasp (CPH) with through bolted surface mounted strike plate. Select chrome or brass finish?  
2. Keyed Locksets (KL) with two keys per lock and master keyed, specify chrome or brass finish.  
3. Dial combination locksets (DC) 3 position, 5 changable, master keyed, specify nickel or brass finish.  
4. Coin Collection (CC), Coin (CR) or Token Return (TR) and Card Operated (CL).  
5. Digital lockset for either temporary (ATS) or permanent (APS) useage. Nickel finish.  
C. Clothes hooks, aluminum finished ceiling hung double prong  
D. Number Disc 1 1/4" recessed, 3/8" numerals, satin chrome Number sequence 1 up in each locker room.

### 2.5 FABRICATION

- A. Lockers shall be fabricated using blunt joint, nail and screw joinery.  
B. Fabricate lockers square, rigid, and without warp.  
C. Machine all parts and attachment holes accurately and without chips.  
D. Fabricate corners, fillers, scribes, tops as required for installation.

### 3.0 EXECUTION

#### 3.1 CONSTRUCTION

- A. Conform to requirements of WIC "Manual of Millworks", latest edition, for joinery requirements using blunt joint, nail and screw construction.

#### 3.2 INSTALLATION

- A. Install lockers at the locations shown in accordance with manufacturer's instructions for plumb, level, rigid and flush installation.  
B. Lockers are easily installed on a standard prefabricated 4 x 17 x 72" unfinished bases per locker room layout, cut to fit as required, level bases using readily available shim shingles  
C. Hang wall straps locker height less 1/2" above bases, spaced approximately 4 to 5 feet apart.  
D. Stack lockers one next to the other per plans, allowing approximately 24" separation in corners, bolt each from together using manufacturer supplied fasteners through predrilled holes. Be sure to align leading edges of locker frames with each other as fasteners are tightened.  
E. Install end and corner fillers and caps, cut to size in field per plans.  
F. Install end panels  
G. Install number discs, clean lockers, remove all related trash and debris from jobsite.

#### 3.3 CLEAN-UP

- A. Upon completion of the work, remove surplus materials, rubbish and debris resulting from the operations under the section, including equipment and implements of service, and leave the entire structure and site insofar as the work of this section concerned in a neat, clean, and acceptable condition.

## ORDERING INSTRUCTIONS

### Example:

Imperial 1000 Series, Model B, 12 x 18 x 72", PL, RP, CH, WT  
1 2 3 4 5 6 7

- 1 Specify Imperial 1000 Series for Natural Wood Veneer Doors. Includes (WT) Wood Tape and (CH) Euro Concealed Hinges.  
2 Select the style and size locker compartment such as Model B, our standard double tier or Model F, our purse size lockers.  
3 Confirm the frame dimensions: Width x Depth x Height.

- 4 Select plastic laminate as your exterior surface and choose any color or combination of colors.  
5 Specify Locks. (RP) = Recessed Padlock Hasp, (PC) = Pushbutton Combination, (DC) = Dial Combination, (CL) = Card Lock, (CO) = Coin-Operated, (CC) = Coin-Collect, (KL) = Keyed.  
6 Specify Hinges. (CH) = Concealed Hinge  
7 Specify Edging. (WT) = Wood Tape

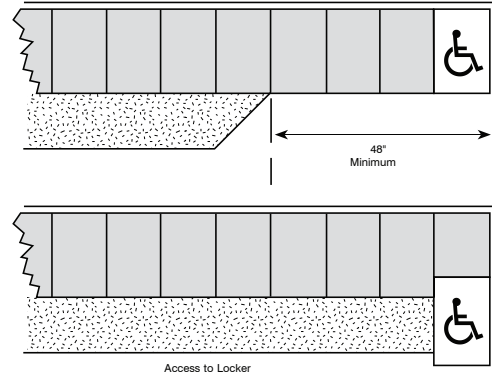
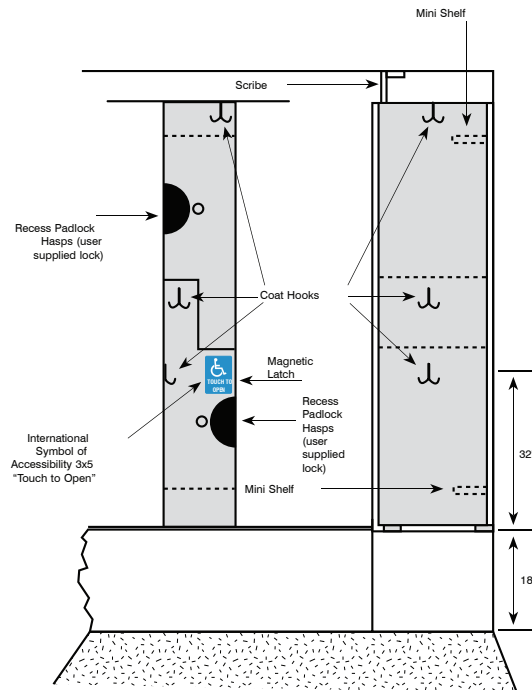


## General Notes

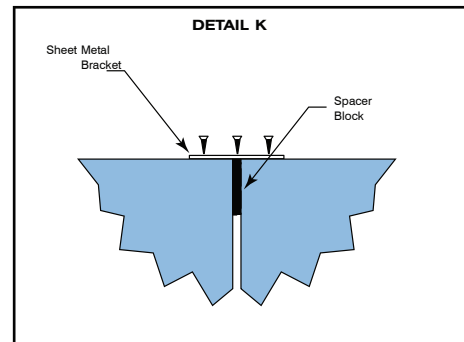
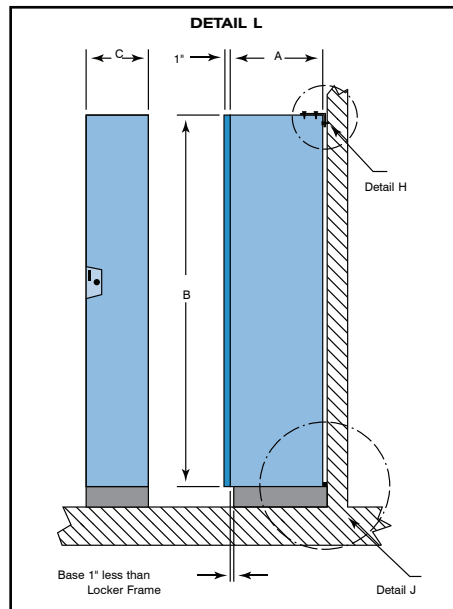
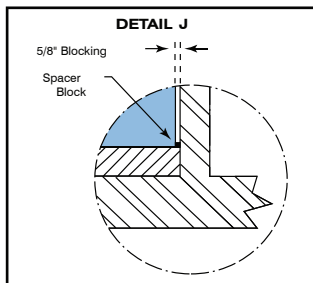
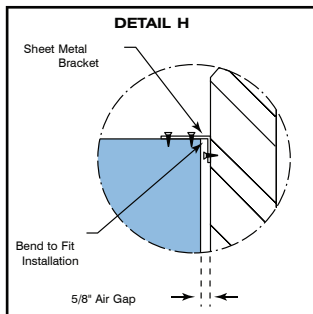
1. Locker to be standard as manufactured by Ideal Lockers.
2.  $\frac{5}{8}$ " spacers edged with matching edging to allow for hand clearance.
3. Single end panels  $18\frac{5}{8}$ " wide to cover rear ventilation.
4. Double end panels  $36\frac{5}{8}$ " wide to allow for air space.
5. Fillers are required.
6. TLW (total locker width) = Total number of lockers x locker width. 12" lockers are 12.0625" wide; 16" lockers are 16.0625" wide.
7. Consult factory for requirements.



## HANDICAPPED OPTIONS



Local building officials will eventually require your clubs to comply with The Americans with Disabilities Act of 1990 which requires the following: At least one of each type locker offered, and for double-tier lockers only the bottom row, be provided for handicapped people. A clear floor space of 30"x48" minimum will allow for either forward or parallel approach by a person using a wheelchair. Storage spaces such as shelves, hooks, coat rods, etc., shall be located at a height of 9" minimum and 48" maximum from the finished floor. Acceptable hardware for accessible lockers are touch latches and U-shaped pulls located as close to the top of the door as possible.







**IDEAL** PRODUCTS, INC.

IDEAL PRODUCTS, INC. • P.O. BOX 4090 • ONTARIO, CA 91761 • (951) 727-8600 • (951) 727-8612 FAX • [WWW.IDEALOCKERS.COM](http://WWW.IDEALOCKERS.COM)